



# The attitudes and experiences of General Practitioners with prehospital emergency care in Ireland

Noel A. Mulligan final year medical  
student University of Limerick

---

# Background

- Immediate care training available since 1989<sup>1</sup>
- Responding to emergencies is a recognised aspect of the GP's role in the community<sup>2,3,4</sup>
- Most interactions occur through direct patient contact/opportunistic encounters<sup>5</sup>
- No BASICS type scheme operating in Ireland

# Background Continued

- This project continued on from the research of Bury et al (2008)<sup>5</sup>
- This study highlighted a number of issues for further investigation in relation to General Practice and prehospital care
- This current study aims to add to the current data available on this topic

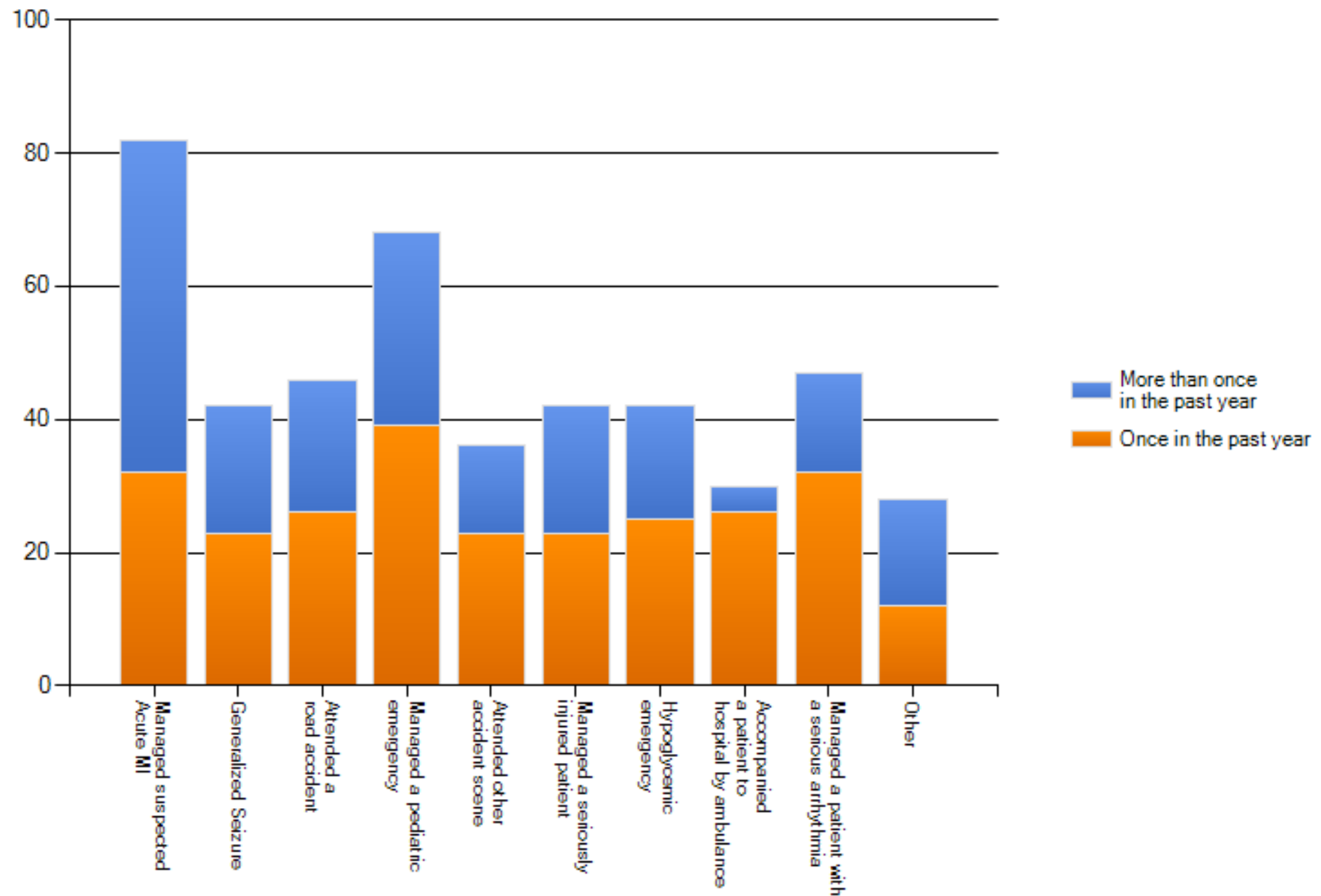
# Methods

- 10 question online survey was compiled
- Link for survey was emailed to all GP's listed in Irish Hospital directory (n=603)
- GP's in the Mid West region were excluded from email survey
- No prior ethical approval required

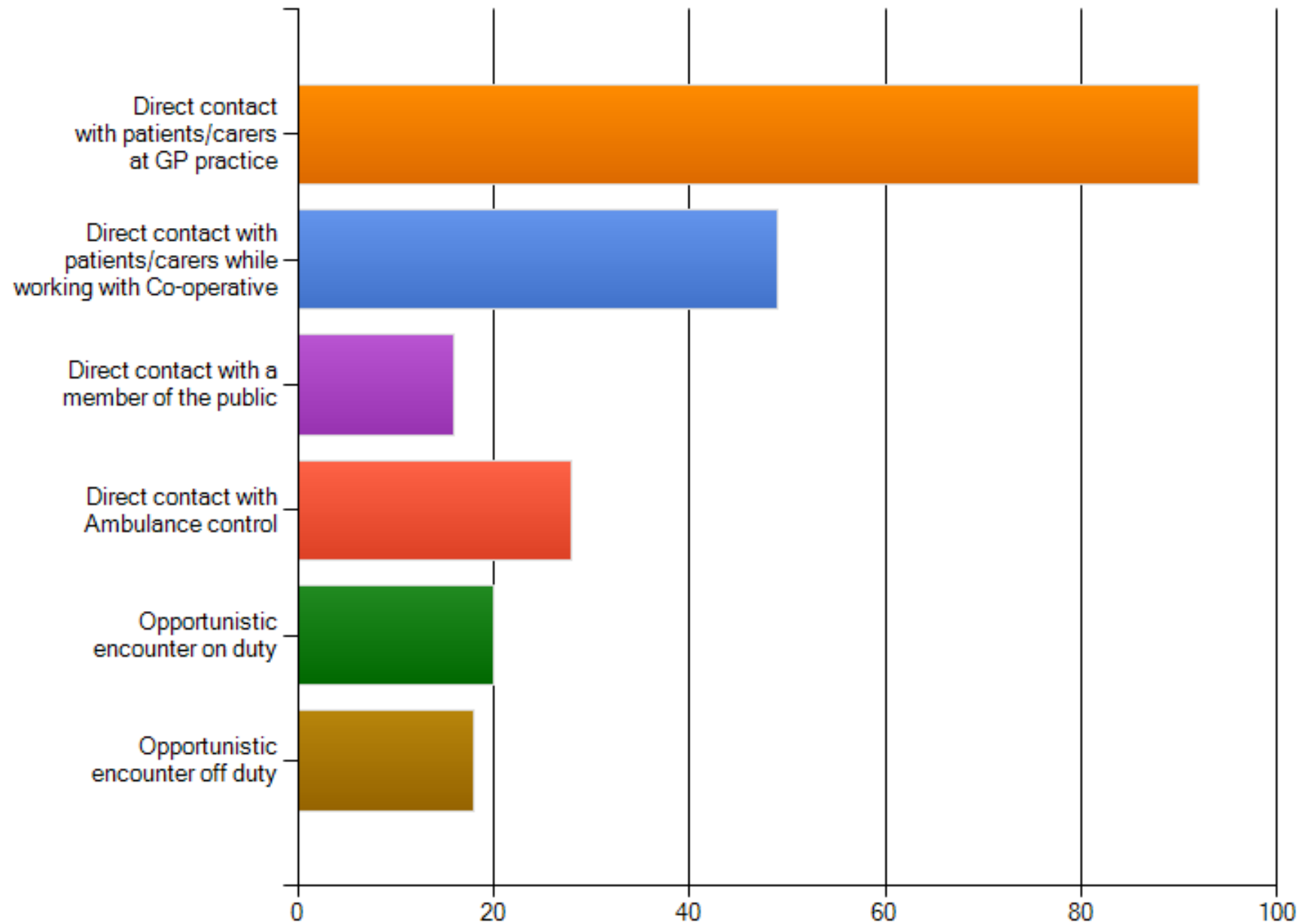
# Results

- Results were analysed using a spreadsheet format
- 125 of the 603 emails sent failed to deliver leaving a total of 478 (n=478) possible respondents
- 100 replies (100/478)
- 21% response rate

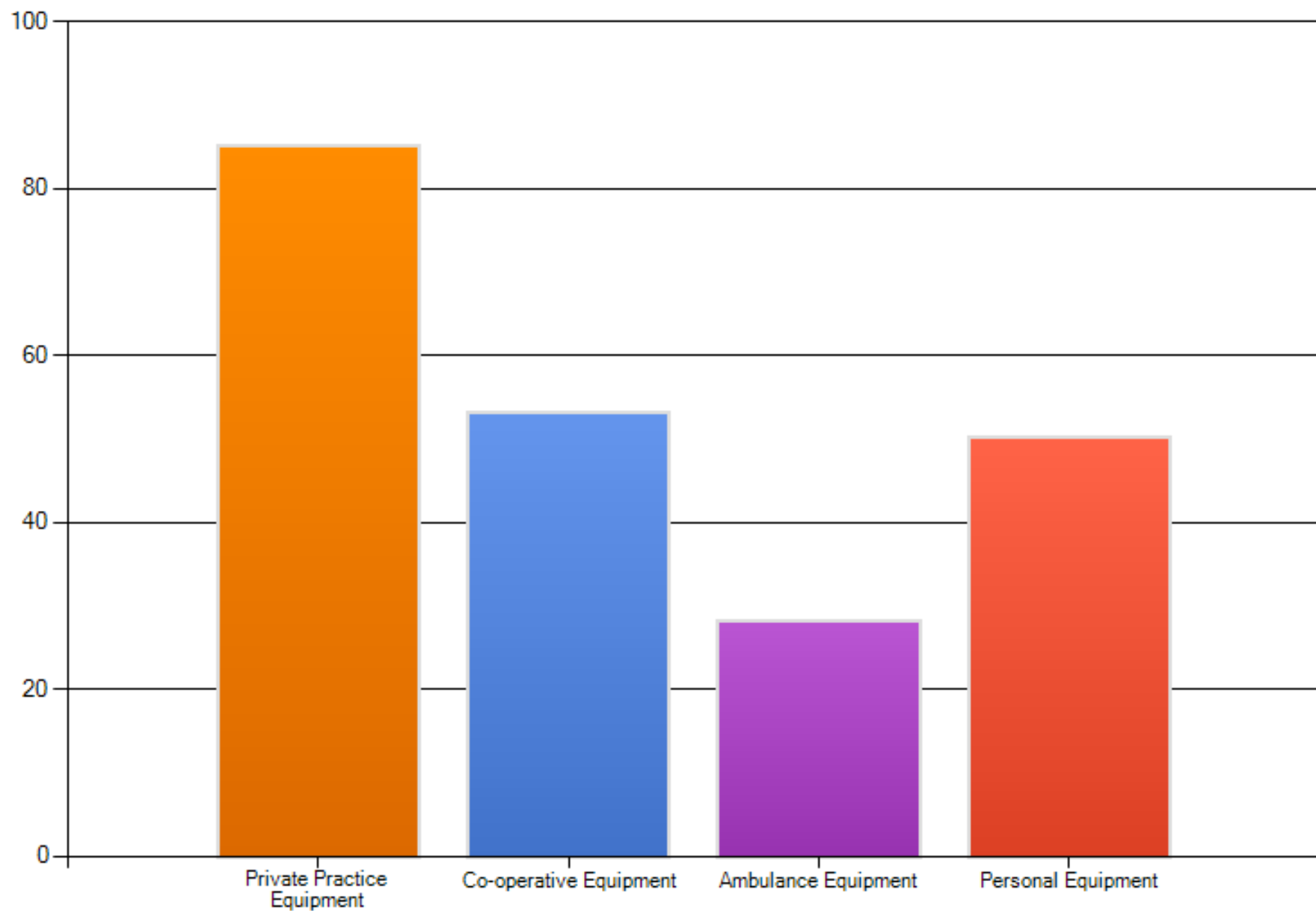
## Which one of the following Prehospital emergencies have you responded to in the past year?



### Were these encounters in response to



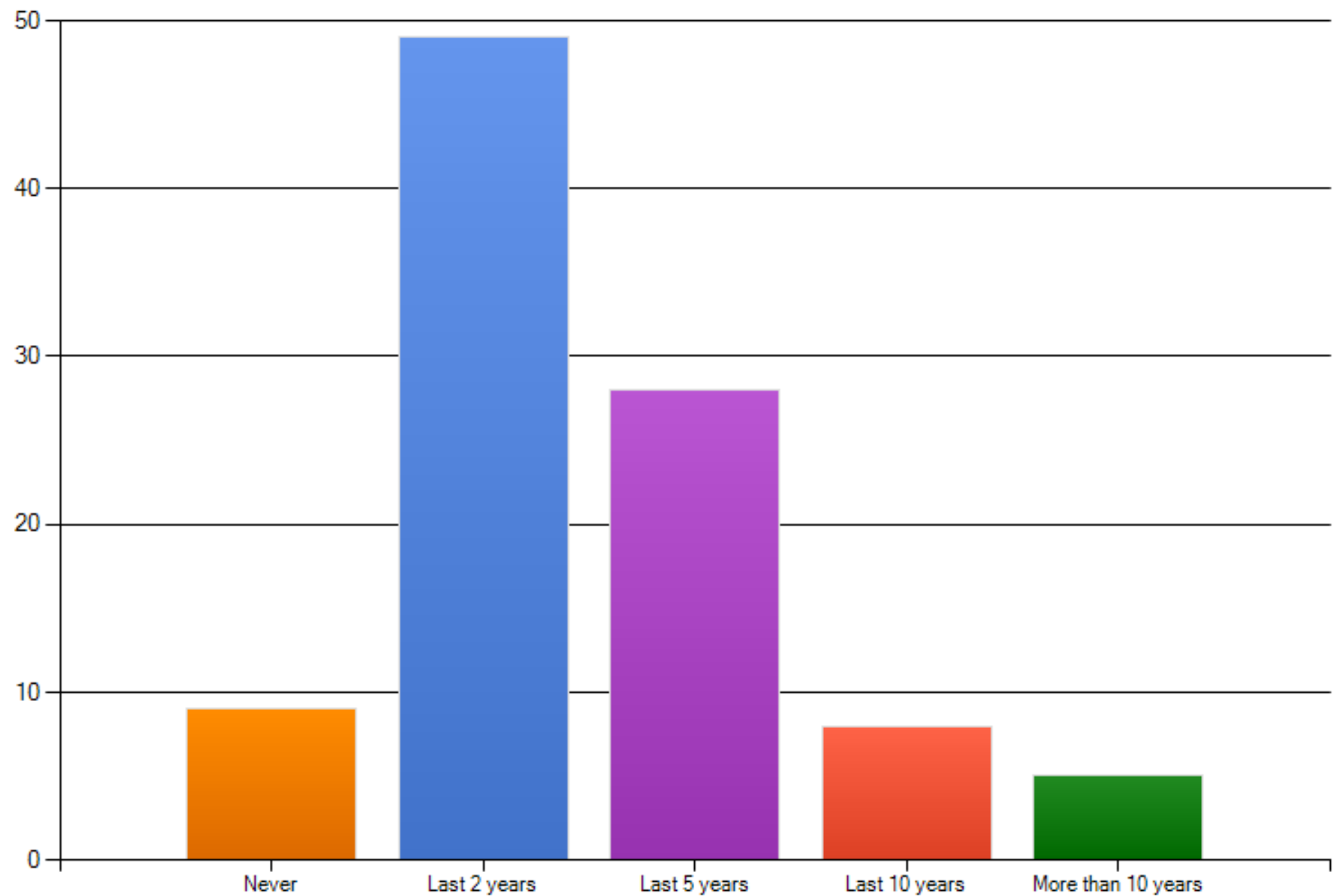
### In responding to a Prehospital emergency, have you used



## Results continued

- **38.9%** of GP's (n=37) had Prehospital personal safety training
- In responding to Prehospital emergencies at the roadside **31.3%** (n=25) had used personal protective equipment
- **46.9%** (n=45) had a defibrillator/prehospital emergency kit in their personal motor vehicle

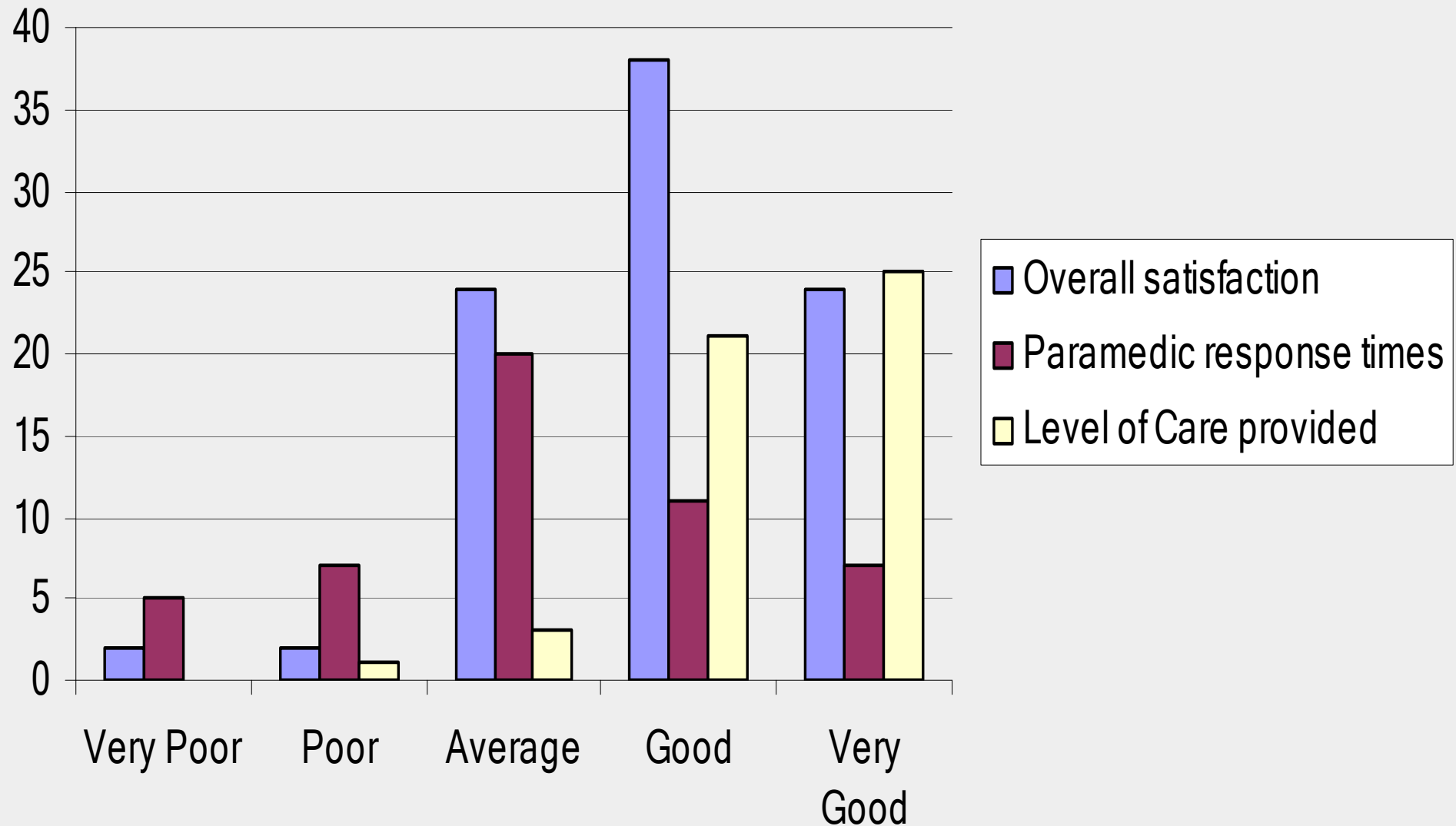
**When was the last time you attended a pre-hospital emergency training course or immediate care training course?**



## Results continued

- **91.7%** (n=88) believed they would benefit from more training in Prehospital emergencies
- **30.6%** (n=30) expressed interest in being part of a co-ordinated voluntary roadside response team in their locality

## General Practitioner's attitudes to and experiences with Pre-hospital care



# Discussion

- GP's are exposed and respond to a large number of pre-hospital emergencies
- The high subscription rates among GP's to Immediate care courses is a positive finding yet more than **90%** still feel they would benefit from additional training in pre-hospital care
- **48%** of GP's have attended a road accident yet only **31.3%** had personal protective equipment on at the scene - a concerning issue

## Discussion continued

- Practice and co-operative equipment most commonly used in emergency response
- Ambulance equipment is also frequently used
- Need for familiarity with ambulance equipment. Raises need for an educational focus on local pre-hospital training involving paramedic teams and standard paramedic equipment.

## Discussion Continued

- Nearly **one third** of GP's stated they would be interested in a voluntary roadside response team – a BASIC type program similar to that in the UK.
- The fact that nearly **half** of all GP's have either a defibrillator or a pre-hospital emergency kit in their personal vehicle is supportive of this.
- Presently this work is uncoordinated for those who wish to partake in a more active role

## Discussion Continued

- Overall, GP interaction with Paramedic service is clearly positive
- In relation to response times and the level of care provided - the results are very much encouraging from a GP perspective.
- Response times and the division between urban and rural settings was not identified in this study

# Conclusion

- Confirms that GP's are exposed to a large number of prehospital emergencies yet many feel they would benefit from further training in this area
- There appears to be a degree of appetite for a BASICS type scheme amongst Irish GP's and this should be explored further
- GP's interaction with paramedic services is relevant to the implementation of this scheme

# References

1. Centre for Immediate Care Services, UCD. Annual report 2006 [www.ucd.ie/genpract](http://www.ucd.ie/genpract).
2. European Academy of Teachers in General Practice. (2005) The European definition of general practice/family medicine.
3. Royal College of General Practitioners What services do GPs offer? Available on <http://www.rcgp.org.uk>
4. Royal Australian College of General Practitioners. RACGP standards for general practices. Available on <http://www.racgp.org.au>
5. Bury, G., Prunty, H., Egan, M. and Sharpe, B. (2008) Experience of prehospital emergency care among general practitioners in Ireland, Emergency Medical Journal, Vol 25, pp. 450 – 454.